

The seal of Southern Lehigh School District is a circular emblem. It features a central shield with a sunburst at the top and a book at the bottom. The shield is surrounded by a circular border containing the text "SOUTHERN LEHIGH SCHOOL DISTRICT" at the top and "CENTER VALLEY, PA" at the bottom. The seal is rendered in a light blue, semi-transparent style, serving as a background for the main title.

Southern Lehigh School District Path to Reopening K-12 Schools

***Learning - Serving - Leading
One Interaction at a Time***

Addressing Community Spread in K-12 Schools

- The RED - YELLOW - GREEN Phases of the Pennsylvania response to the ongoing COVID-19 pandemic represent the “NEW NORMAL” that K-12 public schools must operate in.
- School districts must adapt, become more agile, and prepare plans for varied instructional scenarios that may arise.

Addressing Community Spread in K-12 Schools - Level of Community Spread (As Determined By State and Local Health Officials)

Red Phase (Substantial Spread)	Yellow Phase (Minimal/Moderate Spread)	Green Phase (Low/No Spread)
<ul style="list-style-type: none">· Schools (for in person instruction) and most childcare facilities closed. Implement distance/remote learning.· Coordinate with local and state DPH health officials.· Participate in contact tracing efforts and specimen collection efforts as directed by local health officials (to the extent feasible)· Close off affected areas and if possible, wait 24 hours before cleaning and disinfecting.· Consider ways to accommodate needs of children, teachers/staff, and families at higher risk for severe illness.	<ul style="list-style-type: none">· Schools may provide in-person instruction only in accordance with PDE guidance and after developing a Health and Safety Plan approved by the local governing body and posted on the school entity's publicly available website.· Establish and maintain communication with local and state Department of Health Officials.· Participate in contact tracing and specimen collection as directed by local health officials (to the extent feasible).· Implement enhanced social distancing measures.· Post signage in classrooms, hallways, and entrances to communicate how to stop the spread of COVID-19, symptoms, preventative measures, good hygiene, and school/district specific protocols.· Establish a protocol for students/staff who feel ill/experience symptoms when they come to school.· Consider ways to accommodate needs of children, teachers/staff, and families at higher risk for severe illness.· Districts have the authority and flexibility to close school buildings and utilize distance/remote learning as needed.	<ul style="list-style-type: none">· Schools Subject to CDC and Commonwealth of Pennsylvania Guidance and may provide in-person instruction after developing a written Health and Safety Plan approved by the local governing body and posted on the school entity's publicly available website.· Establish and maintain communication with local and state Department of Health Officials· Participate in contact tracing and specimen collection as directed by local health officials (to the extent feasible)· Post signage in classrooms, hallways, and entrances to communicate how to stop the spread of COVID-19, symptoms, preventative measures, good hygiene, and school/district specific protocols.· Establish a protocol for students/staff who feel ill/experience symptoms when they come to school.· Consider ways to accommodate needs of children, teachers/staff, and families at higher risk for severe illness.

Purpose of the Health and Safety Plan

The Health and Safety Plan will serve as the District's baseline guidance for all reopening activities. The purpose of this plan is to achieve the following goals:

- Maximize safety and security while minimizing the disruption associated with a fractured learning environment.
- Empower the operation of the school district while providing educational, social, and emotional services as normally and successfully as possible.
- For the duration of the pandemic, the District's response will continue to be directed by the guidance provided by the Department of Health and the Department of Education.
- Plan for the fundamental operations in the event of increased staff/student absences.

Purpose of the SLSD Health and Safety Plan cont.

- Maintain a leadership structure to facilitate effective, timely, and community sensitive decision-making regarding continuity of education while ensuring that the student needs remain the core value of the district's mission, vision, and values.
- Develop a communication strategy that will ensure that students, parents, and staff receive timely information regarding disease prevention and infection control strategies.
- Ensure that the Southern Lehigh School District continues to provide a broad range of locally sourced mental health and crisis intervention services to be accessed by the students and staff during these increasingly challenging times.

Southern Lehigh School District Decision Tree

- The District's Path to Reopening for K-12 Schools not only provides considerations for school leaders as they develop plans for restarting school but also includes a framework to address challenges that may develop throughout the school year.
- Instead of a one-size-fits-all approach, the Southern Lehigh School District will be using the following ***“Decision Tree”*** to provide a menu of instructional models that correspond with health and safety guidelines to ensure that the District can adapt to support the social, emotional, and academic successes of all students and staff.

Southern Lehigh School District Decision Tree

Level of Community Spread (As Determined by state and local health officials)	Red Phase (Substantial Spread)		Yellow Phase (Minimal/Moderate Spread)			Green Phase (Low/No Spread)		
Instructional Model	Cyber Learning Model	SLSD Remote Learning Model	Cyber Learning Model	SLSD Remote Learning Model	Hybrid Learning Model (100% return in combination of 50% in-person and 50% remote learning on a rotating schedule)	Cyber Learning Model	SLSD Remote Learning Model	K-6 Modified In-Class Learning Model (100% return in-person) -- 7-12 Hybrid Learning Model (100% return in combination of 50% in-person and 50% remote learning on a rotating schedule)

K-12 Education in the COVID-19 Era

- Our current situation is both unpredictable and constantly evolving.
- Likely realities exist that students, staff, and community can anticipate with regard to the upcoming school year. These realities aid in the development of the district reopening plans, while other realities make reopening more challenging and subsequently limit our efforts.
- As we continue to plan, it is important to remember that we all share the common goal of providing all of students with an outstanding K-12 education while ensuring that the health and safety of our students, staff, and community is continually being monitored.

K-12 Education in the COVID-19 Era

- Some current existing K-12 Realities and Constraints are:
- ◆ The COVID-19 virus will not disappear for the start of the school year
 - ◆ Testing availability for COVID-19 will likely continue to improve
 - ◆ At this time, the majority of K-12 schools in our region are planning to open for some form in-person instruction at the start of the school year
 - ◆ The option for virtual and cyber instruction for interested families will continue to ensure equitable continuity of education for all students
 - ◆ Funding is limited

Fundamental Health and Safety Principles

- All students and staff entering district buildings will be asked to complete a daily COVID-19 Screener prior to entry each day.
- If anyone feels sick or is exhibiting the signs or symptoms related to COVID-19 they need to stay home and seek medical guidance.
- The SLSD Nursing Department continues to work in concert with local health care providers to build systems specific to...
 - ◆ Monitoring students and staff for symptoms and a history of exposure.
 - ◆ Isolating students, staff, or visitors if they become sick or demonstrate a history of exposure
 - ◆ Notifying staff, families, and the public of school closures and changes in safety protocols

General Health and Safety Recommendations

→ Social Distancing

- ◆ Maintaining social distancing during the school day may not be practical or feasible across all settings due existing capacity challenges, space availability, scheduling options, and additional factors.

→ Personal Hygiene

- ◆ All students and staff are expected to wash and/or sanitize hands frequently.
- ◆ The Southern Lehigh School District will provide hand sanitizer in all classrooms and at strategic points in each school building.
- ◆ Personal hygiene extends beyond hands and the District will create video and print materials to promote best practices with respect to personal hygiene.

Face Coverings (Student)

- Per the Secretary of the Pennsylvania Department of Health's Universal Face Covering Order (July 1, 2020), all students and staff must come to school each day with their own cloth face covering.
 - ◆ A supply of masks will be available for those students and staff who may forget.
- Face Coverings must be worn:
 - ◆ When riding on all district transportation
 - ◆ Outdoors if students and staff are unable to consistently maintain six feet social distancing
 - ◆ In any indoor location

Face Coverings (Staff)

- Per the Secretary of the Pennsylvania Department of Health's Universal Face Covering Order (July 1, 2020), all students and staff must come to school each day with their own cloth face covering.
- District staff must wear a mask or face shield at all times throughout the school day.
- The Southern Lehigh School District will provide every staff member with a plastic face shield that can be worn in tandem with a cloth face covering.

Cleaning and Sanitizing

- The Southern Lehigh School District will:
 - ◆ Implement a cleaning, sanitizing, and disinfecting plan for all school buildings that will be performed in accordance with current CDC and DOH guidelines to mitigate communicable diseases with specific emphasis on SARS-Cov-2.
 - ◆ Use EPA disinfectants approved for use against SARS-CoV-2 in accordance with labeling requirements and applicable staff will be trained on how to correctly use these products per CDC and manufactures guidelines.
 - ◆ Ensure that all hard surfaces, high touch, and high traffic areas are included in frequent cleaning and disinfecting schedules.

Cleaning and Sanitizing cont.

Day Shift Custodial Staff

- All disinfectants shall be EPA approved for use against COVID-19 and be for commercial use in schools without harmful components of fragrances.
- Continue everyday responsibilities and tasks.
- Disinfect high touch areas throughout the day
 - ◆ Door knobs
 - ◆ Handrails
 - ◆ Light switches
 - ◆ Elevators
 - ◆ Printer/Copiers
- Disinfect high touch areas in restrooms mid-day
 - ◆ Handles
 - ◆ Knobs
 - ◆ Seats
 - ◆ Paper Dispensers
- Perform classroom cleaning between AM / PM classes (Kindergarten)
 - ◆ Disinfect desks, high touch areas, and restrooms

Night Shift Custodial Staff

- Continue everyday responsibilities and tasks
 - ◆ Clean and disinfect restrooms
 - ◆ Vacuum District owned Carpets with HEPA filtration
 - ◆ Dry mopping
 - ◆ Wet mop or auto scrub with disinfectant
 - ◆ Wipe down, clean and disinfect
 - Chairs
 - Desks
 - Tables
 - Doors, door handles, & door frames
 - Light switches
 - Phones
 - Counters
 - Corridor walls
 - Hand railings
 - Other high touch areas
- Any visibly dirty surfaces will be washed with soap/water or an approved cleaner before disinfecting.
- Disinfecting fogger or misting spray applicator will be used in all areas at least once a week.

Ventilation

- All school buildings have been designed to meet ASHRAE standards for continuous air filtration and the introduction of filtered outside air.
 - ◆ Complete inspection of all SLSD HVAC dampers and equipment by the District HVAC Design Contractor to ensure proper function of existing equipment.
 - ◆ Building ventilation and filtration should operate 100% of the time during occupied periods. Fresh air will be brought into the classrooms at least once per hour.
 - ◆ Failure of fans and outdoor air dampers shall take the highest priority.
 - ◆ MERV 13 filters should be used during the pandemic. Filtration of no less than MERV 8 should be used if MERV 13 filters are not compatible or available.
 - ◆ Outdoor air circulation should exchange indoor air multiple times per day. At no time should it fall below ASHRAE levels for occupied buildings.
 - ◆ COVID-19 procedures shall be instituted for confirmed or probable cases. Those procedures require opening outside air dampers 100% for 48 hours.

Transportation

- Social Distancing guidelines present significant challenges.
 - ◆ At **SIX FEET**, a 72 passenger bus is able to transport 12 passengers.
 - ◆ At **THREE FEET**, a 72 passenger bus is able to transport 24 students.
 - ◆ At **TWO STUDENTS** per seat, a 72 passenger bus would be able to transport 48 students.
- In the **GREEN PHASE**, Southern Lehigh hopes to return either all students or 50% of student to school each day. However, the district does not have the bus capacity or driver availability to provide transportation unless bus routes are planned with two students per seat.
- All students and staff riding district busses will be required to wear a cloth face covering to enter the bus.

Entering the School Building

- Place a moratorium on all non-essential school visitors and school volunteers for the duration of the pandemic.
- Create a protocol for student pick up and drop off with the emphasis of staggered student entry and release. (This may be achieved by staggering by entry, release, grade, class, or bus numbers, or marked parking locations.)
- Limit all unnecessary congregations of students and staff as they enter the building each morning and exit each afternoon.

Food Service

- SLSD will enact alternative food service models that will feature expanding health and safety procedures depending on the the **RED** - **YELLOW** - **GREEN** *Phases of the Pennsylvania response to COVID-19.*
- Potential changes include but are not limited to.
 - ◆ Using existing cafeteria spaces and alternative spaces (gyms) to ensure distancing
 - ◆ Transition from self-service bars to providing pre-packaged meals in a more organized grab n' go fashion
 - ◆ Requiring cashless payment systems
 - ◆ Enhanced cleaning and sanitizing procedures
 - ◆ Altered meal periods to ensure more staggered delivery system

Monitoring Students / Staff

- Symptom screening will be completed by all parents / guardians at home each morning before the school day.
- No students with symptoms will be sent on a bus or brought to school.
- All district staff will perform a symptom screener on himself or herself prior to leaving for work, and will stay home if ill.
- Signage will be posted throughout the school district to ensure that students and staff are consistently made aware of the signs and symptoms of Covid-19.
- Students and staff will go to the nurse immediately if feeling symptomatic.
- The District will share resources with the entire school community to help families understand when to keep children home.

Isolating or Quarantining

- The SLSD nursing teams have worked alongside school administrators and other healthcare providers to identify an isolation room or area to ensure separation of anyone who has COVID-19 symptoms within the existing nursing suites.
- School nurses and other healthcare providers will use Standard and Transmission-Based Precautions when caring for sick people.
- Close off the area used by a person testing positive for COVID-19 and do not use it before cleaning and disinfecting can occur within that space.
- Notify staff and families confirmed cases while maintaining confidentiality.

Returning Following Isolation or Quarantine

The following guidelines are still in the planning stages and alterations may occur pending continued review and recommendations from local health providers and the District nursing team.

- Persons who have COVID-19, who have symptoms, and were directed to care for themselves at home may discontinue isolation under the following conditions:
- ◆ **Potential Return Pathway**
 - 10 days from the onset of symptoms.
 - Resolution of fever without the use of fever-reducing medications for the previous 72 hours.
 - Improvement in respiratory symptoms (i.e. cough, shortness of breath etc.)

District Notification

- Following School Board Approval, Post the Southern Lehigh School District Health and Safety Plan on the SLSD website.
- Provide regular multi-modal updates on the SLSD website, social media accounts, and through the Blackboard Connect Communication System.
- Prepare parents and families for periods of short-term remote learning if a student requires quarantine or if schools require a temporary closure.

Instructional Modalities

→ In both the **YELLOW** and **GREEN** Phases of the PA COVID19 Community Spread designations all SLSD students will have a multitude of instructional options.

Yellow Phase (Minimal/Moderate Spread)			Green Phase (Low/No Spread)		
Cyber Learning Model	SLSD Remote Learning Model	Hybrid Learning Model (100% return in combination of 50% in-person and 50% remote learning on a rotating schedule)	Cyber Learning Model	SLSD Remote Learning Model	K-6 Modified In-Class Learning Model (100% return in-person) -- 7-12 Hybrid Learning Model (100% return in combination of 50% in-person and 50% remote learning on a rotating schedule)

Classroom Distancing Takeaways

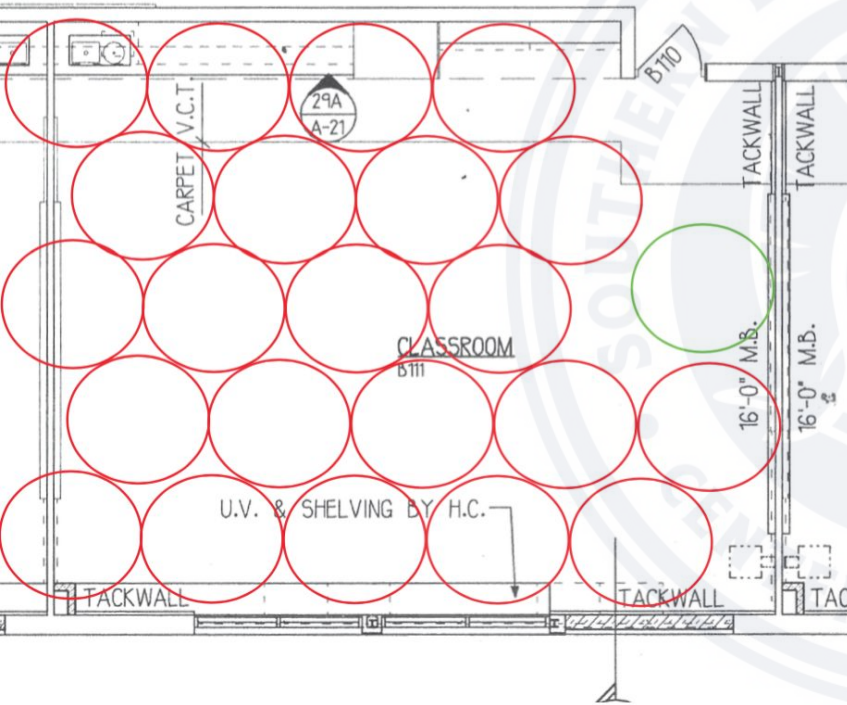
- Modern instructional practices focus on collaboration and interaction. The “Socially Distanced” classroom is not ideal, for teaching utilizing the modern practices that Southern Lehigh has encouraged staff incorporate each day.
- The following “sample” layouts are being provided for reference and demonstration purposes only. Final layouts are dependent on enrollment.
- The building level admin will work with their staff to ensure that the optimum layouts are determined alongside input from instructional staff.
- We must consider the role that permanent fixtures like lab tables and cabinets play in some settings and that most classrooms will have all additional furniture removed to meet distancing recommendations.

Classroom Distancing Breakdown K-3

→ The following figures represent a room breakdown at both Liberty Bell, and Hopewell Elementary Schools to demonstrate the number of desks possible in a the learning spaces when following recommended social distancing guidelines.

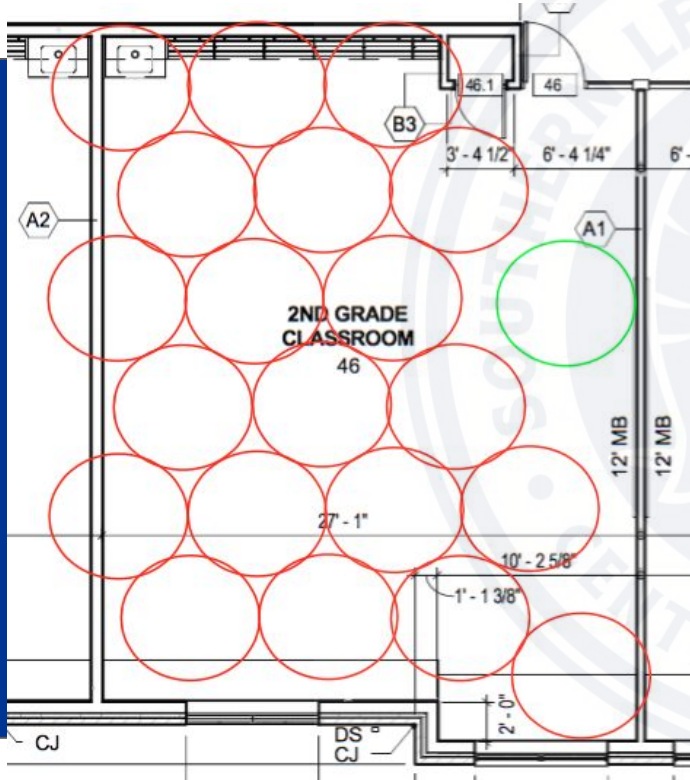
Hopewell	Liberty Bell
23 Student Desks Distanced at 5 x 5	23 Student Desks Distanced at 5 x 5
	** Spanish Immersion Classrooms will be planned with 29 desks using a 5 x 4 distancing segment

Liberty Bell



*Learning - Serving - Leading
One Interaction at a Time*

Hopewell



*Learning - Serving - Leading
One Interaction at a Time*

Classroom Distancing Breakdown 4-6

→ The following figures represent a room breakdowns at JPLIS to demonstrate the number of desks possible in a the learning spaces when following recommended social distancing guidelines.

6x6 Social Distancing	5x5 Social Distancing	4x4 Social Distancing
21 Student Desks	24 Student Desks	30 Student Desks

JPLIS



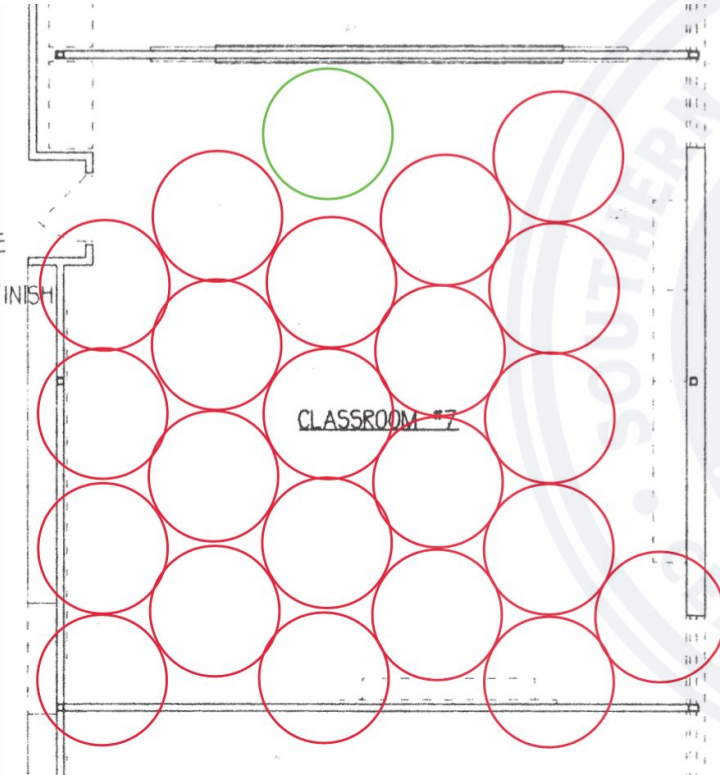
*Learning - Serving - Leading
One Interaction at a Time*

Classroom Distancing Breakdown 7-12

→ The following figures represent a range of room breakdowns at both SLMS and SLHS to demonstrate the number of desks possible in a variety of learning spaces when following recommended social distancing guidelines.

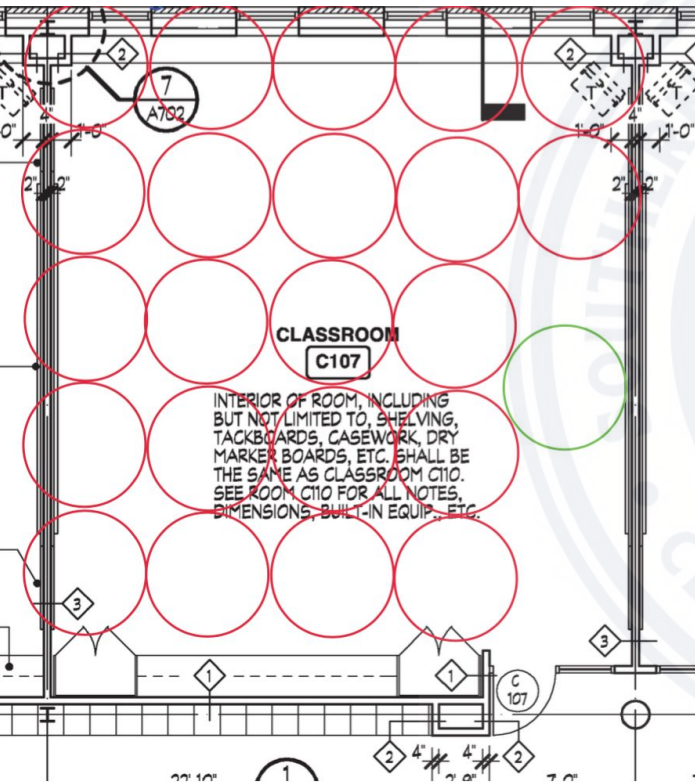
SLMS	SLHS	
Art - 16 Student Desks	Room 123 - 16	Room 142 - 19
ELA - 15 Student Desks	Room 115 - 18	Room 210 - 16
Math - 16 Student Desks	Room 145 - 24	Room 217 - 12

SLMS



*Learning - Serving - Leading
One Interaction at a Time*

SLHS



*Learning - Serving - Leading
One Interaction at a Time*

In-Person Instruction

K-6 - Modified In-Class Learning Model (100% student return in-person)

- 100% of students return for in-person instruction.
- When feasible, implement health and safety guidelines and mitigation strategies like social distancing (3 ft. to 6 ft.) across all settings dependent on numbers of students in buildings.
- Some instructional spaces may need to be divided and/or moved to alternative locations due to size limitations.
- Arrival, dismissal, and/or internal building schedules will likely be modified to attempt compliance with health and safety guidelines.
- Schedule periodic asynchronous online learning times for students to allow for staff professional development, curricular planning, and preparation.
- Follow established District grading and attendance practices.

7- 12 - Hybrid Learning Model (100% return in combination of 50% in-person and 50% remote learning on a rotating schedule)

- Staggered use of school buildings on an alternating schedule with 50% of students returning for in-person instruction at one time and the other 50% participating via live-streamed classes from home. (i.e. AABB or ABAB)
- Allow for greater implementation of health and safety guidelines and mitigation strategies like social distancing across all settings due to reduced numbers of students in buildings.
- Internal building schedules may be modified and/or adjusted to maximize in-person instructional time with students.
- Schedule periodic asynchronous online learning times for students to allow for staff professional development, curricular planning, and preparation.
- Follow established District grading and attendance practices.
- Students with disabilities would be encouraged to attend school each school day should their family choose so.

SLSD Remote Learning Model

Remote Learning Model

Available based on a Need for Quarantine

- At any time in the **YELLOW** or **GREEN** Phase, remote learning will be available to students who can not participate in in-class learning due to a medically identified need to quarantine.
- K-12 classroom lessons may be streamed live via ZOOM and/or asynchronous learning may be provided to ensure continuity of learning as a result of individual student need.
- When healthy but quarantined, students would be expected to participate in all lessons that are live streamed and complete all assignments that are prepared by their classroom teacher.
- Utilize Seesaw (K-3), Google Classroom (4-12), or Canvas (9-12) to push out daily assignments.
- Follow established District grading and attendance practices.

Cyber Learning Model

Cyber Learning Model

Available as an alternative to public cyber options:

- SLSD Cyber Learning Program is a learning program administered through a cooperative agreement with the Carbon Lehigh Intermediate Unit (CLIU21).
- It is recommended that students electing to enroll in the Cyber Learning Model commit to remain in the program for at least a quarter or semester. This ensures that the student will experience uniform instructional procedures for the duration of the enrollment.
- Student academic progress and attendance would be required by District staff.
- Follow established District grading and attendance practices.

Instructional Modalities

→ In the **RED** Phase of the PA COVID19 Community Spread designation all SLSD students will move to a remote learning model.

**Red Phase
(Substantial Spread)**

Cyber Learning Model

Long Term Remote Learning Model

Long Term Remote Learning Model

Long Term Remote Learning Model

Available based on a Need for Large Group Quarantine

- All instruction will be provided via online remote learning by SLSD instructional staff.
- Both synchronized and asynchronized learning activities will be utilized to teach new content K-12.
- Utilize Seesaw (K-3), Google Classroom (4-12), or Canvas (9-12) to push out daily assignments.
- Follow the District's established grading and attendance practices.

Cyber Learning Model

Cyber Learning Model

Available as an alternative to public cyber options:

- SLSD Cyber Learning Program is a learning program administered through a cooperative agreement with the Carbon Lehigh Intermediate Unit (CLIU21).
- Students electing to enroll in the Cyber Learning Model commit to remain in the program for at least a quarter or semester. This ensures that the student will experience uniform instructional procedures for the duration of the enrollment.
- Student academic progress and attendance would be required by District staff.
- Follow established District grading and attendance practices.

What Is Next

- Continue to use information gathered from Return to School Health and Safety Plan Community Forums to continue to finalize plans.
- Continue to work alongside community leaders both across the district and the Lehigh Valley to finalize 20-21 Health and Safety Plan.
- Board discussion and approval of the Health and Safety Plan at a Special Meeting of the Southern Lehigh Board of School Directors on 7/20/20.
- Parent / Guardian surveys to obtain definitive numbers related specific student Learning Environment selections and District Transportation
- Finalize K-12 Building Schedules and share any changes with community
- Develop print and video content for students, staff, and the community about best practices in hygiene, social distancing, and other valuable areas.